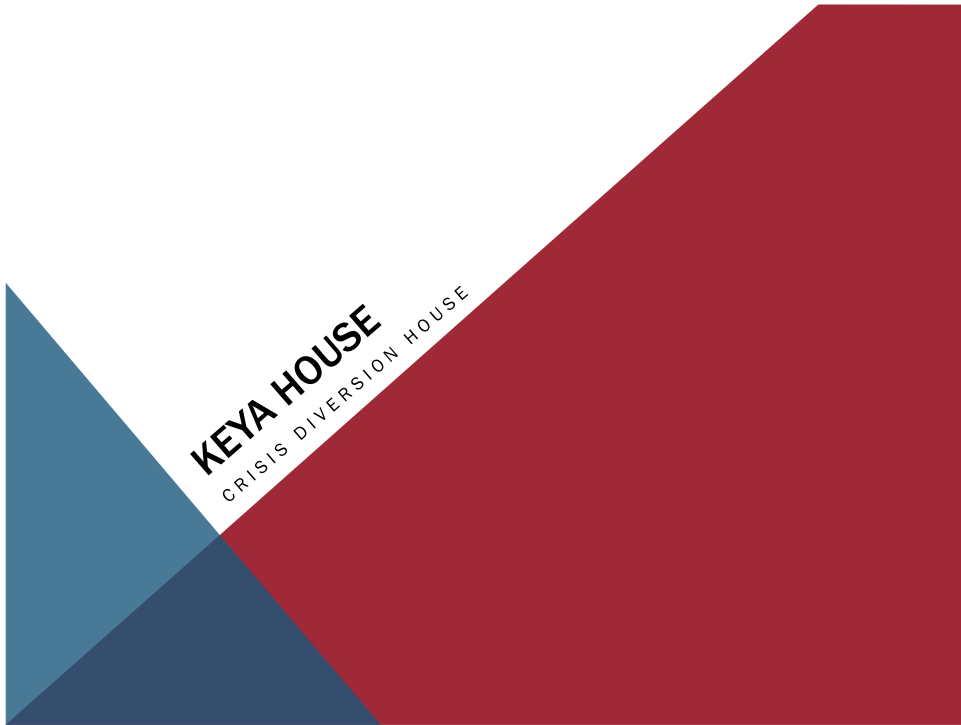




## MENTAL HEALTH ASSOCIATION OF NEBRASKA

- Peer-run organization since 1999
- Non-profit
- Nebraska's only peer-run behavioral health organization in the state
- Only organization in the state to provide peer directed services
- MHA-NE is dedicated to ensuring that public mental health policy is just, fair, and promotes equality and opportunity
- MHA-NE supports freedom for individuals with behavioral health issues.
- Freedom: to decide where one lives, works, the relationships they establish, how they choose to contribute to the community, and the services they will use





## KEYA HOUSE

- Nebraska's first crisis diversion house
- Voluntary and free of charge
- Guests can stay for up to 5 days
- Utilizes the recovery model
- Staffed by trained peer specialists
- Warm line that is staffed 24 hours a day
- The 1<sup>st</sup> and only CARF Accredited Crisis Respite
- Only respite house that has a volunteer program



## An Alternative to traditional services . . .

December, 2009 through June, 2015, Keya has welcomed:

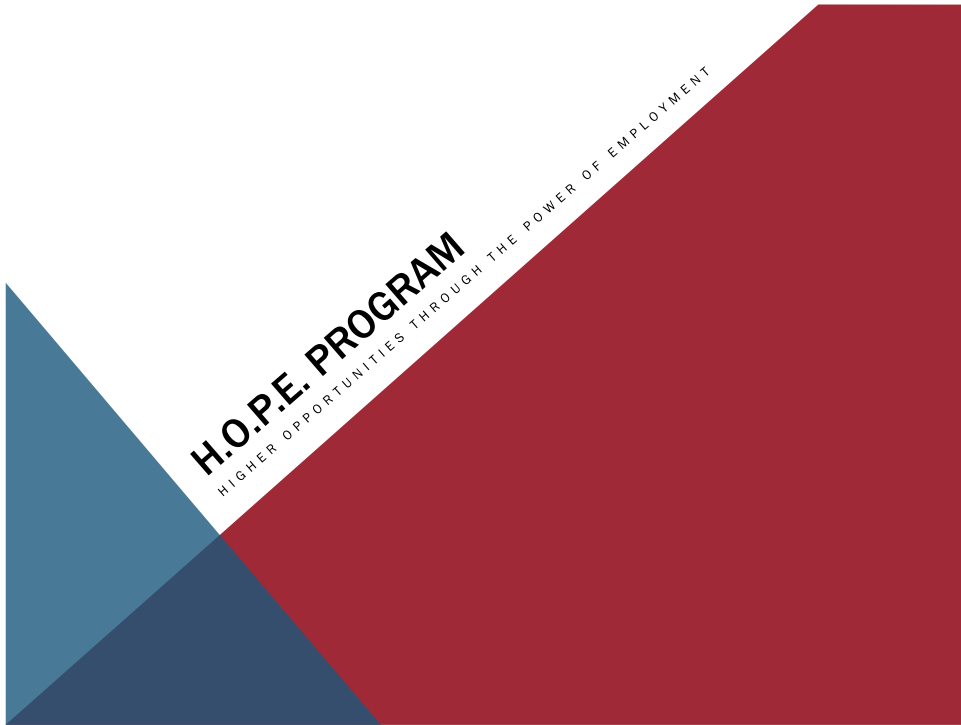


\*not including the cost of emergency services (police, medical, etc.)



## KEYA HOUSE





- Supported employment programs help people find competitive jobs, (that is, jobs that pay at least minimum wage that any person can apply for) that are based on the person's preferences and abilities
- Qualifications:
  - Person must have a diagnosis of a behavioral health disorder
  - Person must have a desire to work



## H.O.P.E. PROGRAM

- Consumers, family members, and advocates are well aware that people with behavioral health disorders have many talents and abilities that are often overlooked. These include the ability and motivation to work. Work is an important part of the recovery process for many consumers.
- Research has shown that:
  - 70% of adults living with severe mental health issues desire work.
  - 60% or more of adults living with severe mental health issues can be successful at working when using supported employment.



## THE R.E.A.L. PROGRAM

- Working in collaboration with the Lincoln Police Department, UNL Police Department, Lancaster County Sheriff's Department, and other community agencies
- Referrals arrive and a peer responds within 24 hours



## THE R.E.A.L. PROGRAM

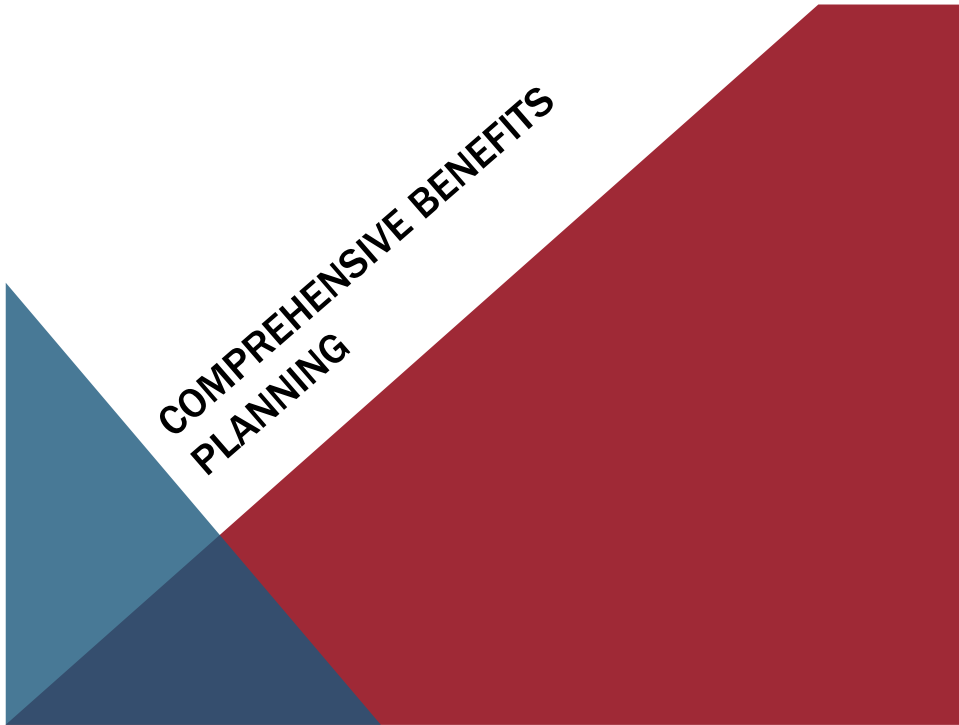
- The service is voluntary and free of charge
- The peer can help the person referred determine what services are appropriate and available
- Follow-ups are made providing additional peer support
- The peer communicates directly with the referral source
- Locally and Nationally recognized as a innovative program



## THE R.E.A.L. PROGRAM

- 1,051 referrals
- 226 Officers
- 60% success rate in contacting people
- 85% accept services





## BENEFITS SUMMARY AND ANALYSIS

- Services available to anyone: 19 years old or older, Have a behavioral health diagnosis, Currently receiving benefits, Interested in knowing how returning to work will affect their benefits
- Participants can be self-referred, or referred by another provider
- Beneficiaries receiving Social Security Disability Insurance and/or Supplemental Security Income receive a comprehensive written benefits analysis that is tailored to the individual participant's benefits situation and stated work goal.
- The Benefits Specialist meets one-on-one with the participant to discuss the written analysis and available work incentives which include health care options.
- Follow up services are provided at regular scheduled intervals and at critical touch points which are identified at the initial meeting.
- Beneficiaries can receive assistance in communicating with the Social Security Administration and the Nebraska Department of Health and Human Services.



## SSI/SSDI, OUTREACH, ACCESS, AND RECOVERY-SOAR

- Program designed to increase access to SSI/SSDI for *eligible adults who are homeless or at risk of homelessness and have a mental illness and/or co-occurring substance use disorder with other medical impairments*
- Nationally, only about 30 percent of individuals who apply for SSI/SSDI are approved on initial application. For people who are homeless and have no one to assist them, that percentage is cut by more than one half. When applications are denied, appeals can take an average of *one year* to complete, and in that time applicants often give up hope. There are now 50 states implementing SOAR. These states report average approval rates of 65% in an average of 94 days on initial SSI/SSDI applications using the SOAR model.





## HONU HOME

- For individuals coming out of state correctional facilities or within 18 months of release
- Serves up to 5 individuals at a time
- Individuals can stay for up to 90 days with reviews every 30 days
- Free to the individual
- Voluntary



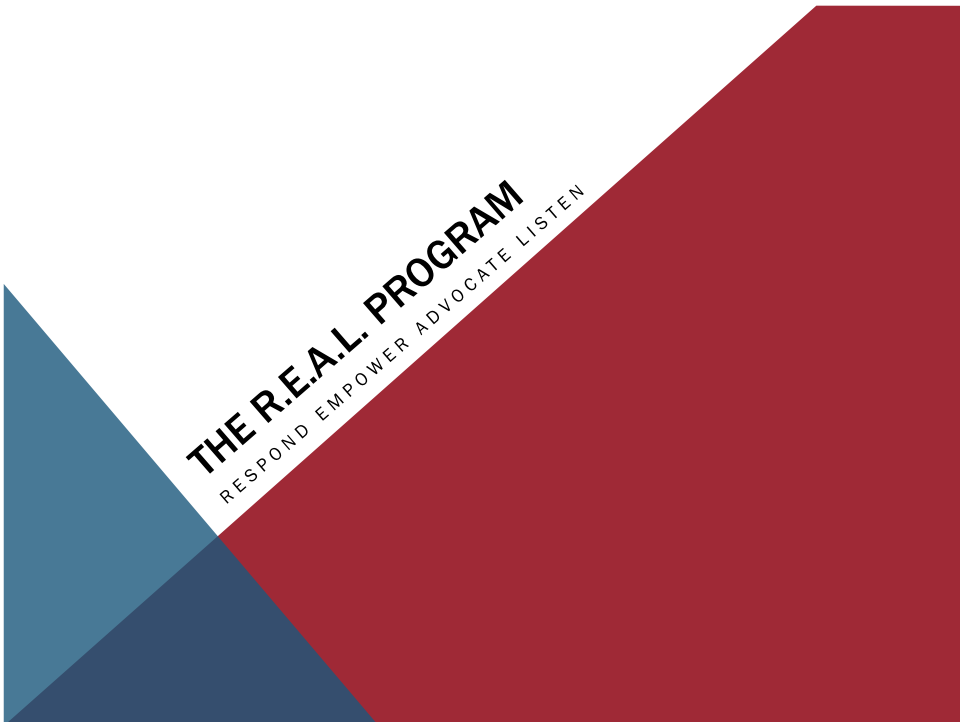
## HONU HOME





## TEACHER AND STUDENT EDUCATIONAL IN-SERVICES

- MHA-NE peers provide education to teachers and staff and also provide W.R.A.P. and to students.



## MENTAL HEALTH ASSOCIATION OF NEBRASKA



1645 "N" Street  
Lincoln, NE 68508  
Phone: 402-441-4371  
Fax: 402-441-4377  
[www.mha-ne.org](http://www.mha-ne.org)

