

# Recuperative Care Center of Los Angeles

Presented by  
**National Health Foundation**

Elizabeth Yang, MA, Director

Jeannine Pugliese, BSW, Coordinator

October 26, 2012

# Learning Objectives



**Define the benefits of recuperative care**

**Identify the role of recuperative care in the healthcare system**

**Assess whether recuperative care is appropriate for a person served**

## Homeless Population

**It is estimated that the homeless population is approximately 51,000 in Los Angeles and 18,000 in Orange County**

(Source: 2011 Los Angeles Homeless Services Authority and Point-In-Time Count and Survey conducted by Applied Survey Research, OC Partnership, Orange County Health Care Agency, and OC Community Services).

## Introduction to Recuperative Care

**In 2008, Los Angeles City Council adopted an ordinance making it illegal for hospitals to release homeless patients without a safe discharge.**

(Source: Los Angeles City Ordinance #179913, passed May 16, 2008)

## Introduction to Recuperative Care

**In response to this ordinance, the Hospital Association of Southern California and National Health Foundation (NHF) responded to this need by developing and expanding recuperative care as a safe discharge option.**

# Define the benefits of recuperative care

## Recuperative Care Center

**The Recuperative Care Center, located in Los Angeles and Orange Counties, provide hospitals a discharge option for homeless patients who are not sick enough to remain in the hospital, but too sick for the shelter.**

## Recuperative Care Center

### Patient receives:

- a safe and clean environment to recover
- basic medical oversight
- 3 meals a day
- support in attending following up appointments
- connection to supportive services and housing options.



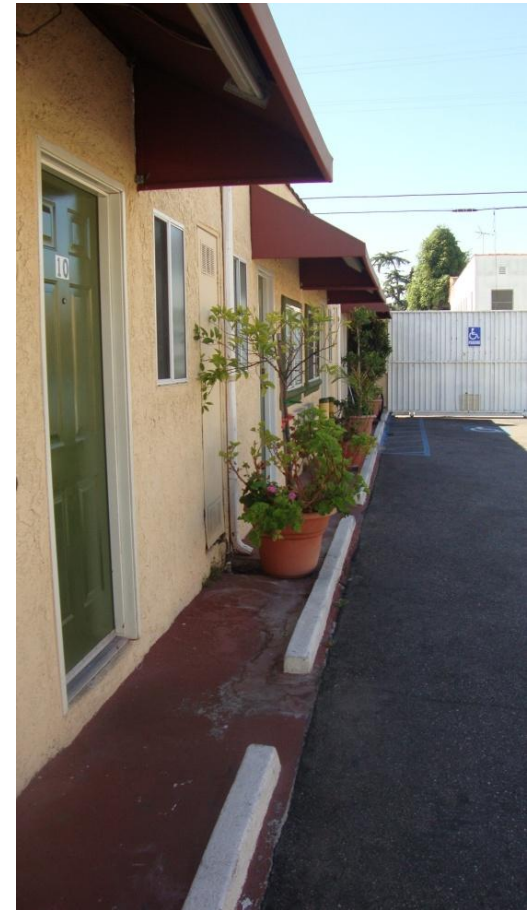
# Recuperative Care Center Site

Location: La Brea and Washington Blvd.

Admission Hours: \*Monday- Friday, 9:00am-6:00pm  
20 beds available (Double occupancy room)



# Recuperative Care Center Site



## Recuperative Care Center

**Recuperative Care Center offers the homeless patient an opportunity to continue to recover in a stable environment upon discharge, which reduces potential health complications and subsequent hospital readmissions.**

(Source: Recuperative Care: 2012 Summary Report, [www.nhfca.org](http://www.nhfca.org))

# Identify the role of recuperative care in the healthcare system

## Role of Recuperative Care in Healthcare

**The high rates of homeless hospital utilization, readmission, and even keeping the patients additional days has substantial cost implications for our healthcare system.**

(Source: 2007 National Health Foundation, [www.nhfca.org](http://www.nhfca.org))

## Estimated Hospital Cost

**It is estimated that patients are kept up to three to four extra days in the hospital, due to insufficient availability of appropriate beds. Average inpatient bed cost is \$2676/day vs. \$200/day (recuperative care bed)**

(Source: American Hospital Association 2010 Annual Survey estimate inpatient cost at \$2676/day. This is only an estimate of expenses incurred by the hospital to provide a day of inpatient care.  
<http://www.ahaonlinestore.com/ProductDisplay.asp?ProductID=637.>)



# Recuperative Care Center Inception YTD Summary

Hospital Costs	Year	to	Date
	Potential	Actual	Savings
Combined	\$11,924,256	\$2,416,600	<b>\$9,507,656</b>
Los Angeles	\$5,790,864	\$1,090,000	<b>\$4,700,864</b>
Orange County	\$6,133,392	\$1,326,600	<b>\$4,806,792</b>

- Los Angeles: October 1, 2010 – August 31, 2012
- Orange County: January 1, 2010 – August 31, 2012

## **Role of Recuperative Care in Healthcare**

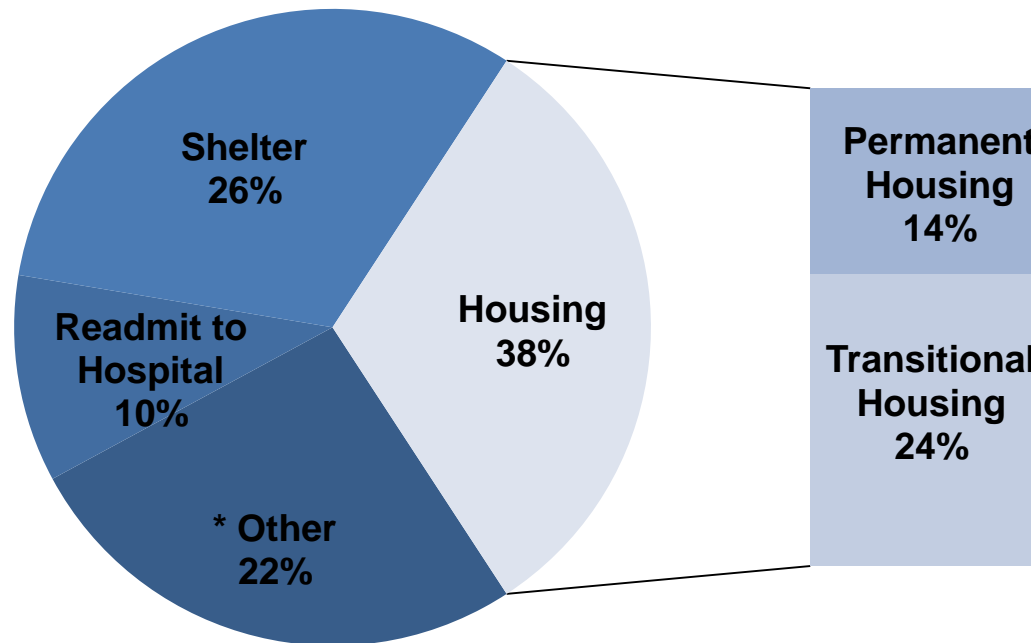
**Recuperative Care decreases costs by not only eliminating the hospitals' need to keep the patient longer, but also by providing the necessary medical oversight these patients need to reduce Emergency Department visits after discharge.**

(Source: Recuperative Care: 2012 Summary Report, [www.nhfca.org](http://www.nhfca.org))



# DISCHARGE DISPOSITION FOR LOS ANGELES RECUPERATIVE CARE CENTER

## OCTOBER 2010 - AUGUST 2012



\* Patient walked out of program or declined housing option  
Source: NHF Recuperative Care Database

# **Assess whether recuperative care is appropriate for a person served**

## Admission Criteria

- Homeless
- Have an acute medical condition
- Demonstrate independence in mobility and ADL's
- Independent in self- administration of medications
- Continent of both bowel & bladder and independent in personal care
- Medically and psychiatrically stable

## **Exclusion Criteria**

- Not Homeless**
- Dependent in ADL's, needs stand-by assist with mobility and/or personal care**
- Incontinent of bowel and/or bladder**
- Actively detoxing and unwilling to abstain from alcohol and/or illegal substances**
- Non-compliant, aggressive or violent behavior**
- Psychiatrically unstable (non-compliance with medications)**

**National Health  
Foundation (NHF)  
is your  
“Single Point  
of Contact”**

**Monday-Friday,  
8:00am-5:00pm**

[www.NHFca.org/recup](http://www.NHFca.org/recup)

- **Fax “One Page”  
Patient Referral Form  
and medications list.**
- **Receive a response  
within “4 business  
hours”**
- **Receive Email alerts and  
recuperative care patient  
outcome summary**

# Recuperative Care Center Forms

## **“One Page” Referral Form**

- Direct link to download form on National Health Foundation’s website: [www.nhfca.org/recup](http://www.nhfca.org/recup)

## **Hospital Checklist**

- Hospital Checklist is provided when patient is approved for recuperative care. Checklist is “tailored” to each patient referral.

## **Discharge Instructions**

- Fax completed checklist and patient’s discharge instructions before patient leaves your hospital.

# Questions?

## Contact Information:

**Elizabeth Yang, Director of Recuperative Care Center**

[eyang@nhfca.org](mailto:eyang@nhfca.org)

**Jeannine Pugliese, Coordinator of Recuperative Care Center**

[jpugliese@nhfca.org](mailto:jpugliese@nhfca.org)

Website: [www.nhfca.org](http://www.nhfca.org)